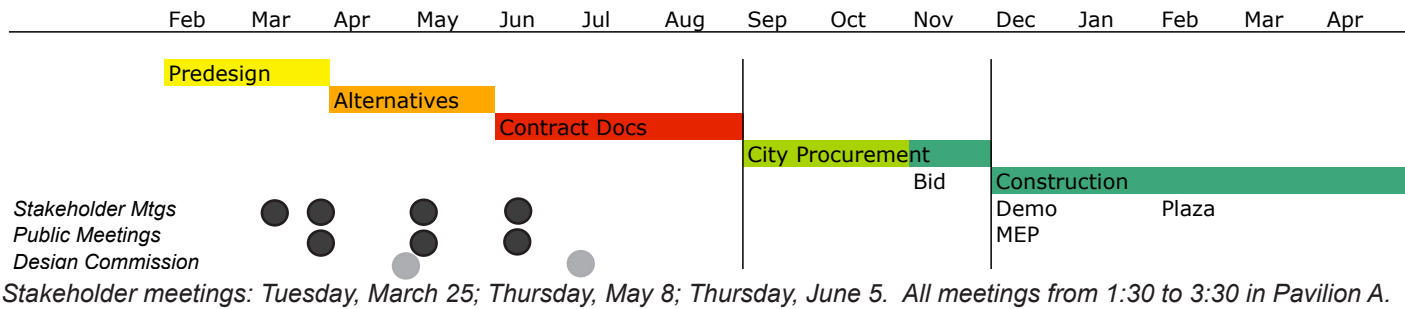
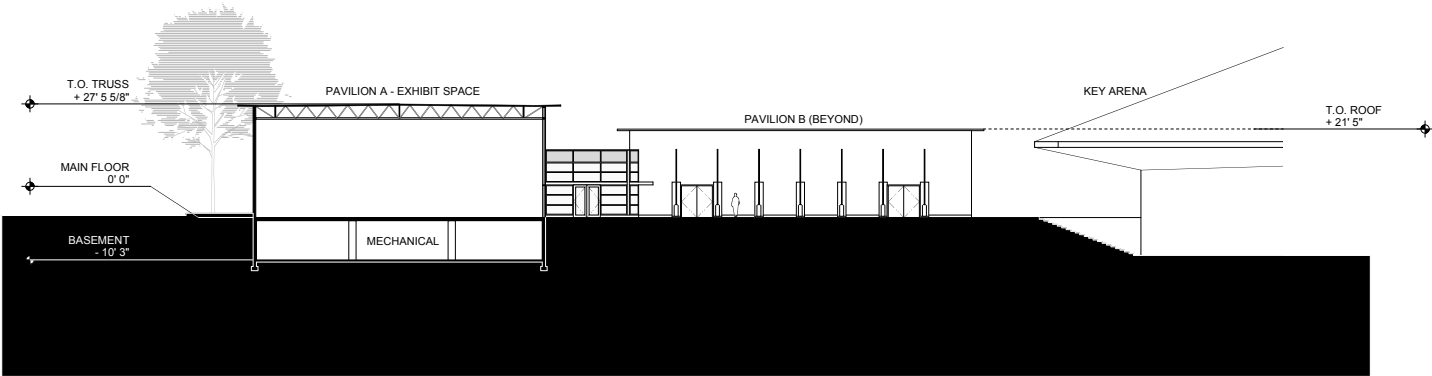
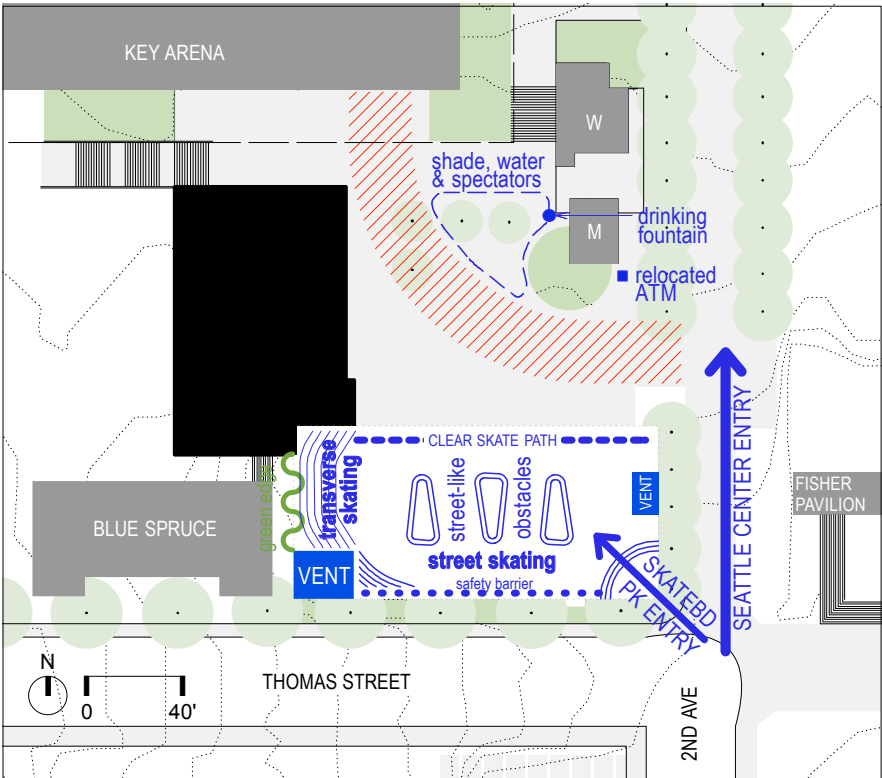


4. Seattle Center Skateboard Park Schedule:



5. Site Conditions

The skateboard park is to include a minimum of 8,900 square feet of skateable area and will include amenities such as seating and landscaping. Pavilions A is two-story structures with the lower story partially below grade. The skateboard park would be constructed on top of the lower story, with lower story functions left intact. The project identifies elements of the existing buildings that need to be modified or maintained in order to preserve existing lower story functions.



NORTH - SOUTH SECTION THROUGH PAVILION A
SCALE: 1/16"=1'-0"

6. Opportunities and Concerns